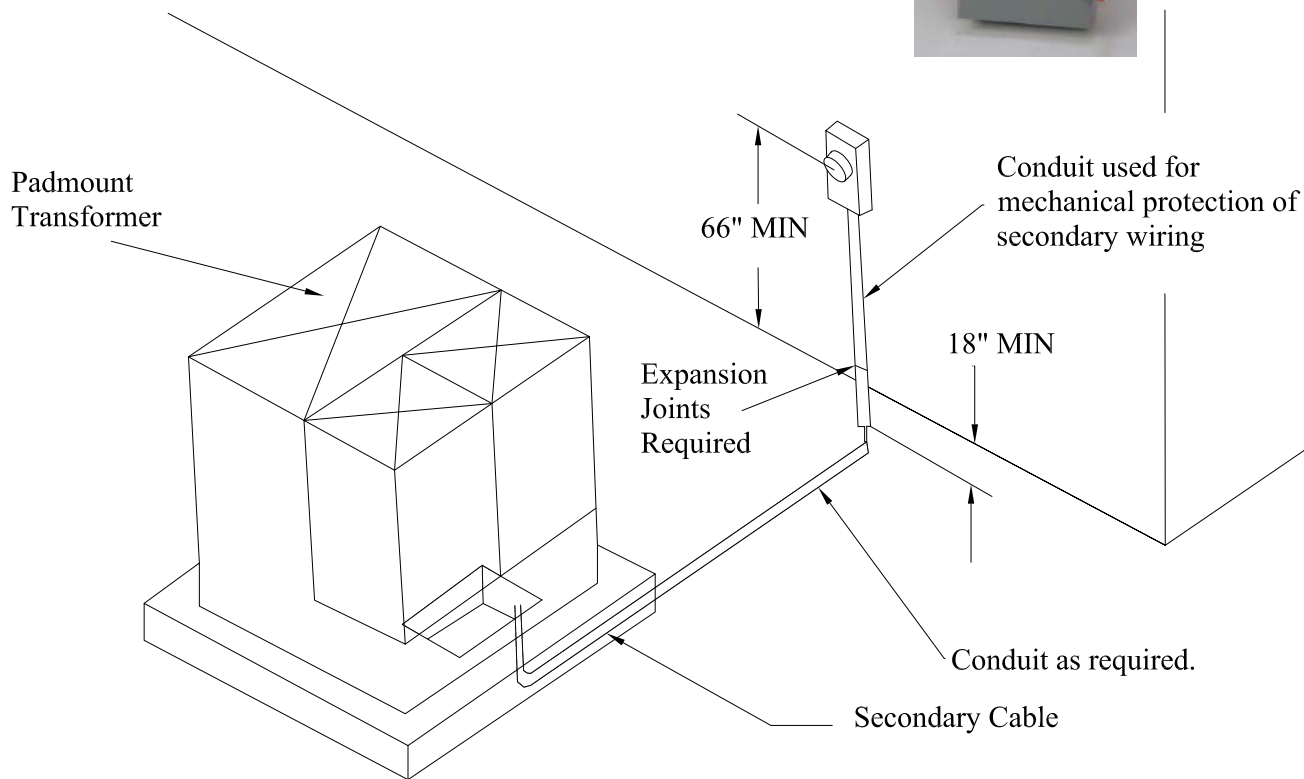


1. Method for installation of metering to meter socket on building wall.
2. Meter height shall be between 66" and 72" to center of meter.
3. Meter socket must not be attached directly to padmounted transformer.
4. Conduit shall be used for secondary control wires to meter socket.



ITEM	PART #	MATERIAL	QTY
1	8245-3	PVC Conduit, Sched 80 - 3"	As Reqd'
2	9160-3	Pipe Strap - 3"	As Reqd'
3	9820-3	PVC Expansion Coupling - 3"	1
4	9186	7T 200 Amp 3Ø Meter Box w/Switch	1
5		Form 15S/16S Class 200 120-480V 4-Wire 3Ø Meter	1

### Design Parameters:

1. See design notes above.
2. Recommended Cable: 4/0 URD Sec. Quadruplex Al (290 Amp Rating)

**120/208V, 200 Amp - 75kVA Bank ,  
4-Wire Self Contained Transocket  
Underground Secondary Cable to Building  
Mounted Meter**

RUS

12/06/2017

REV. A



UM8.7A-02SC